

DODGE[®] TIGEAR-2[®] Setting a New Standard for Wormgear Speed Reducers

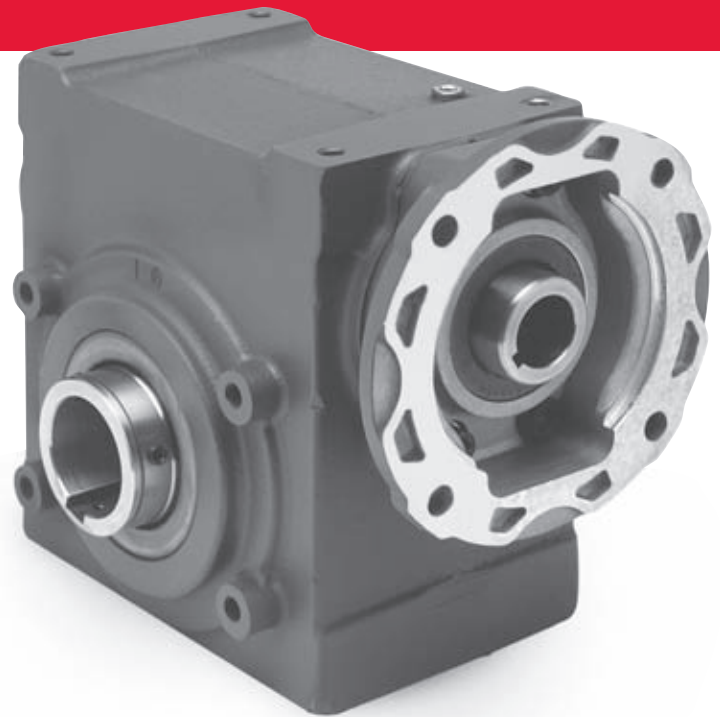
The DODGE TIGEAR-2 speed reducers are the only complete line of single-reduction, right-angle worm speed reducers specifically engineered with new sealing and bushing system technology that can actually lower your cost of ownership.

Standard and Optional Features:

- Compact Drive package
 - Direct drive, beltless shaft mount configurations
 - Belt or chain driven solid output base mount units
 - Up to 10 Hp input
 - Up to 60:1 ratio in single reduction reducer
 - Quill and 3-piece coupled style NEMA inputs in addition to Separate keyed input configurations
- Virtually Maintenance-Free
 - Totally enclosed ventless construction
 - Factory filled with synthetic lubricant
 - No routine oil changes required
 - Advanced Sealing Technology for long leak-free performance
- Advanced Gear Design
 - More torque capacity
 - Higher efficiency
 - Less wear



- New GRIP TIGHT[®] Tapered Adapter Bushing
 - Eliminates fretting corrosion with shaft mounted drives - Easy-on, Easy-off
 - 360° press fit performance
 - No loose parts
 - Keyless solutions available



Hollow Bore Reducers



Quill Input

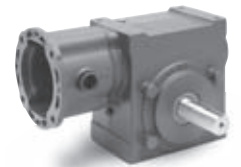


3-piece Coupled Input

Solid Output Shaft Reducers



Quill Input



3-piece Coupled Input

Ratio	SIZE	13	15	17	20	23	26	30	35	40	47
5	Mechanical Input HP	1.32	1.75	2.59	3.47	5.25	7.37	10.84	15.18	20.24	28.45
	Output Torque	219	293	430	581	881	1247	1849	2593	3449	4832
	Output OHL	650	710	1050	1050	1330	1330	1330	2120	2860	5100
7.5	Mechanical Input HP	1.04	1.40	2.06	2.78	4.18	5.92	8.74	12.24	16.38	23.35
	Output Torque	251	337	500	678	1026	1458	2171	3054	4071	5801
	Output OHL	650	710	1190	1190	1520	1520	1540	2430	3280	5600
10	Mechanical Input HP	0.85	1.13	1.67	2.25	3.42	4.83	7.11	10.00	13.33	19.27
	Output Torque	270	361	534	725	1106	1576	2347	3310	4418	6390
	Output OHL	650	710	1190	1320	1610	1610	1720	2700	3640	5600
15	Mechanical Input HP	0.64	0.86	1.27	1.69	2.57	3.62	5.00	7.44	10.01	14.05
	Output Torque	293	392	583	790	1199	1708	2371	3599	4804	6739
	Output OHL	650	710	1190	1500	1610	1610	2300	2760	4190	5600
20	Mechanical Input HP	0.53	0.70	1.03	1.34	2.00	2.71	3.81	5.79	7.75	10.82
	Output Torque	304	407	602	796	1178	1673	2345	3620	4822	6659
	Output OHL	650	710	1190	1560	1610	1610	2300	2760	4300	5600
25	Mechanical Input HP	0.46	0.60	0.88	1.11	1.65	2.26	3.05	4.72	6.35	8.76
	Output Torque	311	410	609	788	1184	1677	2284	3586	4722	6410
	Output OHL	650	710	1190	1560	1610	1610	2300	2760	4300	5600
30	Mechanical Input HP	0.39	0.51	0.76	0.96	1.42	2.00	2.75	4.15	5.61	7.95
	Output Torque	314	413	615	802	1201	1705	2417	3682	4898	6845
	Output OHL	650	710	1190	1560	1610	1610	2300	2760	4300	5600
40	Mechanical Input HP	0.32	0.41	0.60	0.76	1.11	1.55	2.09	3.23	4.43	6.21
	Output Torque	319	417	627	801	1193	1685	2324	3622	4800	6644
	Output OHL	650	710	1190	1560	1610	1610	2300	2760	4300	5600
50	Mechanical Input HP	0.27	0.34	0.51	0.64	0.95	1.32	1.75	2.64	3.63	5.05
	Output Torque	313	402	608	787	1182	1662	2257	3485	4559	6241
	Output OHL	650	710	1190	1560	1610	1610	2300	2760	4300	5600
60	Mechanical Input HP	0.23	0.29	0.43	0.56	0.80	1.08	1.50	2.19	3.00	4.12
	Output Torque	298	381	576	767	1111	1547	2138	3194	4166	5683
	Output OHL	650	710	1190	1560	1610	1610	2300	2760	4300	5600

Ratings based on 1750 RPM input and 75 degree F ambient / Output torque capacity shown in lb-in. OHL capacity shown in lbs.



World Headquarters

P.O. Box 2400, Fort Smith, AR 72902-2400 U.S.A., Ph: (1) 479.646.4711, Fax (1) 479.648.5792, International Fax (1) 479.648.5895

Baldor - Dodge

6040 Ponders Court, Greenville, SC 29615-4617 U.S.A., Ph: (1) 864.297.4800, Fax: (1) 864.281.2433

www.baldor.com