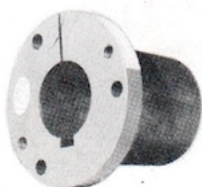
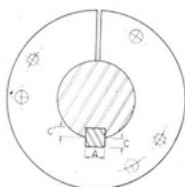
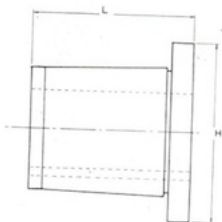


BUJES IBSA ESTANDAR

EXISTENCIA CONSTANTE EN LOS BARRENOS MAS USUALES



BUJE TIPO	H	L	TORNILLO	BARRENO MAXIMO C/STD	BARRENO MAXIMO C/PLANO
Uo	64 2 1/2	30 (1 3/8)	63 X 25 (1/4 X 1)	25 (1)	28 (1 1/8)
Vo	79 3 1/8	40 (1 9/16)	79 X 25 (5/8 X 1)	35 (1 3/8)	41 (1 5/8)
V1	79 3 1/8	48 (1 7/8)	79 X 25 (5/8 X 1)	35 (1 3/8)	41 (1 5/8)
V2	79 3 1/8	73 (2 7/8)	79 X 25 (5/8 X 1)	35 (1 3/8)	38 (1 5/8)
Wo	108 4 1/4	50 (2)	95 X 31 (3/8 X 1 1/4)	54 (2 1/8)	62 (2 7/16)
W1	108 4 1/4	63 (2 1/2)	95 X 32 (3/8 X 1 1/4)	54 (2 1/8)	62 (2 7/16)
W2	108 4 1/4	88 (3 1/2)	95 X 32 (3/8 X 1 1/4)	54 (2 1/8)	62 (2 7/16)
Xo	140 5 1/2	60 (2 3/8)	111 X 38 (7/16 X 1 1/2)	70 (2 3/4)	76 (3)
X1	140 5 1/2	73 (2 7/8)	111 X 38 (7/16 X 1 1/2)	70 (2 3/4)	76 (3)
X2	140 5 1/2	98 (3 7/8)	111 X 38 (7/16 X 1 1/2)	70 (2 3/4)	76 (3)
Y1	171 6 3/4	82 (3 1/4)	127 X 44 (1/2 X 1 3/4)	88 (3 1/2)	102 (4)
Y2	171 6 3/4	108 (4 1/4)	127 X 44 (1/2 X 1 3/4)	88 (3 1/2)	102 (4)
Z1	206 8 1/8	87 (3 3/8)	158 X 57 (5/8 X 2 1/4)	108 (4 1/4)	119 (4 11/16)
Z2	206 8 1/8	120 (4 3/4)	158 X 57 (5/8 X 2 1/4)	108 (4 1/4)	119 (4 11/16)

CUÑEROS Y CUÑAS		ESTANDAR		PLANO	
DIAMETRO DE FLECHA	CUÑERO EN FLECHA A x C'	CUÑERO BARRENO A x C	CUÑA A x C' (C)	CUÑERO BARRENO A x C	CUÑA A x C' (C)
13 o 14 (1/2 o 3/8)	31 X 1.5 (1/8 X 1/8)	31 X 1.5 (1/8 X 1/8)	31 X 3.1 (1/8 X 3/8)	---	---
16 o 22 (5/8 o 7/8)	47 X 2.3 (3/8 X 3/8)	47 X 2.3 (3/8 X 3/8)	47 X 4.7 (3/8 X 3/8)	---	---
24 o 32 (1 1/8 o 1 1/4)	63 X 3.1 (1/4 X 1/8)	63 X 3.1 (1/4 X 1/8)	63 X 6.3 (1/4 X 1/4)	6.3 X 1.5 (1/4 X 3/8)	6.3 X 4.7 (1/4 X 3/8)
33 o 35 (1 3/8 o 1 3/4)	79 X 3.9 (5/8 X 5/8)	79 X 3.9 (5/8 X 5/8)	79 X 7.9 (5/8 X 5/8)	7.9 X 1.5 (5/8 X 3/8)	7.9 X 9.5 (5/8 X 7/8)
36 o 44 (1 7/8 o 1 3/4)	95 X 4.7 (3/8 X 3/8)	95 X 4.7 (3/8 X 3/8)	95 X 9.5 (3/8 X 3/8)	9.5 X 3.1 (3/8 X 1/2)	9.5 X 12.7 (3/8 X 5/8)
46 o 57 (1 5/8 o 2 1/4)	127 X 6.3 (1/2 X 1/4)	127 X 6.3 (1/2 X 1/4)	127 X 12.7 (1/2 X 1/2)	12.7 X 3.1 (1/2 X 1/8)	12.7 X 9.5 (1/2 X 3/8)
59 o 70 (2 1/8 o 2 3/4)	158 X 7.9 (5/8 X 5/8)	158 X 7.9 (5/8 X 5/8)	158 X 15.8 (5/8 X 5/8)	15.8 X 4.7 (5/8 X 1/2)	15.8 X 12.7 (5/8 X 1/2)
71 o 82 (2 3/8 o 3 1/4)	190 X 9.5 (3/4 X 3/8)	190 X 9.5 (3/4 X 3/8)	190 X 19.0 (3/4 X 3/4)	19.0 X 3.1 (3/4 X 1/8)	19.0 X 12.7 (3/4 X 1/2)
84 o 95 (3 1/8 o 3 3/4)	222 X 11.1 (7/8 X 7/8)	222 X 11.1 (7/8 X 7/8)	222 X 22.2 (7/8 X 7/8)	22.2 X 4.7 (7/8 X 3/8)	22.2 X 15.8 (7/8 X 5/8)
97 o 114 (3 3/8 o 4 1/2)	254 X 12.7 (1 X 1/2)	254 X 12.7 (1 X 1/2)	254 X 25.4 (1 X 1/2)	25.4 X 6.3 (1 X 1/4)	25.4 X 19.0 (1 X 3/4)
116 o 140 (4 1/8 o 5 1/2)	317 X 15.8 (1 1/4 X 5/8)	317 X 15.8 (1 1/4 X 5/8)	317 X 31.7 (1 1/4 X 1 1/4)	31.7 X 6.3 (1 1/4 X 3/4)	31.7 X 22.2 (1 1/4 X 7/8)
141 o 165 (5 1/8 o 6 1/2)	381 X 19.0 (1 1/2 X 3/4)	381 X 19.0 (1 1/2 X 3/4)	381 X 38.1 (1 1/2 X 1 1/2)	38.1 X 6.3 (1 1/2 X 1/4)	38.1 X 25.4 (1 1/2 X 1)
167 o 190 (6 1/8 o 7 1/2)	444 X 19.0 (3/4 X 3/4)	444 X 19.0 (3/4 X 3/4)	444 X 38.1 (3/4 X 1 1/2)	44.4 X 6.3 (3/4 X 1/4)	44.4 X 25.4 (3/4 X 1)
192 o 229 (7 3/8 o 9)	508 X 19.0 (2 X 3/4)	508 X 19.0 (2 X 3/4)	508 X 38.1 (2 X 1 1/2)	50.8 X 9.5 (2 X 3/8)	50.8 X 28.5 (2 X 1 1/2)

Todos los medidos en milímetros (pulgadas).

* Cuñero (5/8 x 1/16).

** Cuñero (1 1/8).